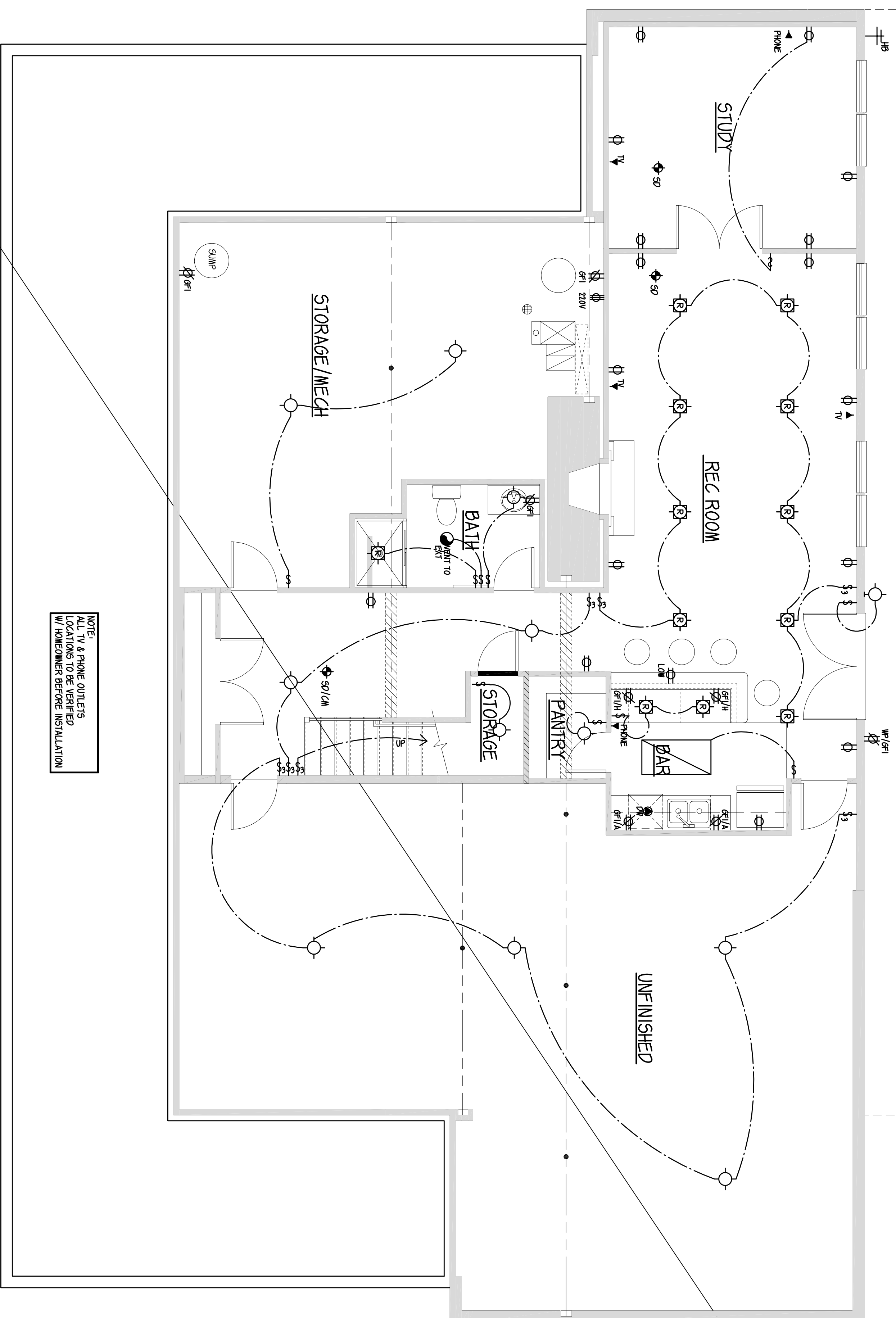


EXAMPLE SET - DO NOT COPY



ELECTRICAL SYMBOLS	
	CONVENIENCE OUTLET - SET 12' AFF UNO.
	CONVENIENCE OUTLET - 42" AFF.
	CONV. OUTLET - MOUNTED HORIZ. IN BACKSLASH
	CONV. OUTLET - 220 VOLT
	CONVENIENCE OUTLET - 1/2 SWITCHED 12' AFF.
	CONV. OUTLET - WATER PROOF - GFI
	GARAGE DOOR OPENER
	SWITCH - 3 WAY - MAX - SET 36" AFF UNO.
	DUAL SWITCH STACK
	LIGHT FIXTURE
	RECESSED LIGHT FIXTURE
	SURFACE MOUNTED LIGHT FIXTURE WITH PULL CHAIN
	SURFACE MOUNTED LIGHT FIXTURE WITH PULL CHAIN & PUSHED OPERATION
	FLUORESCENT LIGHT
	DOORBELL CHIMES
	DOORBELL - 37" AFF.
	ELEC. METER
	GAS METER
	SMOKE DETECTOR - AC POWERED, INTERCONNECTED W/ BATTERY BACK-UP - LOCATE 4'-0" MIN. FROM RA REGISTERS
	SMOKE DETECTOR OR COMBINATION SMOKE / CARBON MONOXIDE DETECTOR ONLY IF RECD BY LOCAL CODE. AC POWERED, INTERCONNECTED W/ BATTERY BACK-UP - LOCATE 4'-0" MIN. FROM RA REGISTERS
	VENT TO EXT
	EXHAUST FAN / LIGHT COMBO
	FAN / LIGHT COMBO
	VENT TO EXT
	ELECTRIC PANEL
	COMPRESSOR
	CLAW FOOT
	CENTRAL VACUUM OUTLET
	SECURITY PANEL
	INTERCOM
	NON-FIXED DISCONNECT SWITCH
	KEY PAD
	CONTROL CONSOLE
	SECURITY SENSORS
	ALARM HORN
	MOTION DETECTOR
	JUNCTION BOX & DISH WASHER
	THERMOSTAT
	DOORBELL TRANSFORMER
	WEATHER PROOF
	PHONE
	TV OUTLET - 12' AFF.
	HOSE BIB
	FLOOR DRAIN W/ CONDENSATE
	RAIN LINE
	WALL CAP

PLUMBING SYMBOLS

BASEMENT ELECTRICAL PLAN
SCALE: 3/16" = 1'-0"

NOTE:
ALL TV & PHONE OUTLETS
LOCATIONS TO BE VERIFIED
W/ HOMEOWNER BEFORE
INSTALLATION

REVISIONS	
DATE	DATE
NOTES	NOTES
DRAFTER	DRAFTER
NOTES	NOTES

VOGEL DRAFTING, INC.
RESIDENTIAL DRAFTING SERVICES
11410 FOREST WALK DR. SPOTSVILVANIA, VA 22553
540-977-412 PHONE - 540-977-8971 FAX
WWW.VOGELDRAFTING.COM

EXAMPLE SET
BASEMENT ELECTRICAL PLAN

NOTES:
CLIENT:
FILE NAME:
DATE:
DRAFTER:

SHEET **8.00**